

Products Design Features

In dam application, control valves such as Hollow jet valves are installed after the butterfly valves on the outle. These valves always work as flow regulating or control valves. Hollow jet valves designed to perform regulating or c function in water supply system without any vibration as much as valve opening.

Advantages

- 1-Accurate adjustment
- 2-No cavitation
- 3-No vibration
- 4-Manual operating needs less force. Regardless of piston situation, force required to move the piston extre thoroughly open and closed are the same.
- 5-Because of discharging to air no cause of turbulence and no need to install anti water hammer in downstream.
- 6- Easy maintenance

Technical Specification

Driving manger: Manual-operated/Electric-actuated

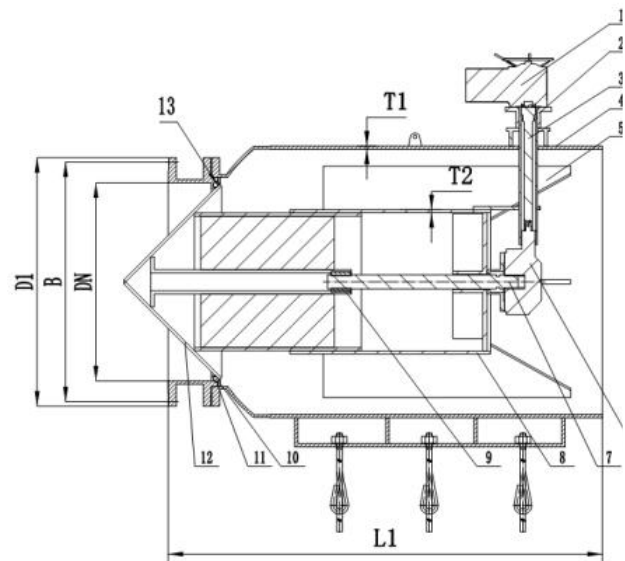
Flange ends: EN1092-1 PN10/16,ASME B16.5

Test & inspection: EN12266,IS05208D

Fluid Media: Water

Working Temp.: $\leq 70^{\circ}\text{C}$

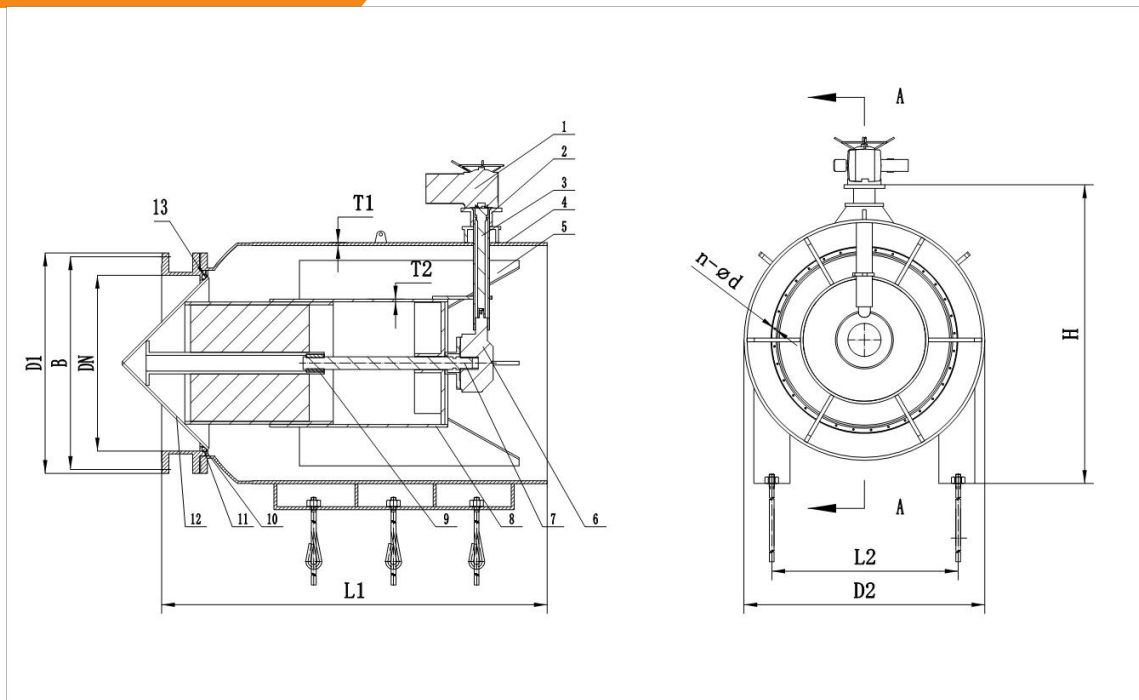
Main Parts and Material



HOLLOW JET VALVE

Part No.	Description	Material
1	Electric actuator	Assembly
2	Yoke	Carbon steel
3	Shaft	ASTM SS420
4	Body	Carbon steel
5	Re-forcing rib	Carbon steel
6	Bevel gear	Assembly
7	Driving shaft	SS420
8	Shutter body	Carbon steel
9	Nut	Al.Bz or Brass
10	Retaining ring	Carbon steel or stainless steel
11	Shutter seal ring	NBR/EPDM/SS304+Graphite
12	Shutter cone	Carbon steel
13	Body seat ring	Welded stainless steel

THT-VALVE



Dimensional Data

DN(mm)	L1(mm)	D1(mm)	B(mm)	d	n	D2(mm)	L2(mm)	Wgt(kg)
400	950	565	515	M24	16	580	490	1460
600	1250	780	725	M27	20	870	735	2320
800	1650	1015	950	M30	24	1160	980	3330
1000	2050	1230	1160	M33	28	1450	1225	4540
1200	2450	1455	1380	M36	32	1740	1470	6000
1500	3050	1795	1705	M45	40	2175	1840	8700
1800	3650	2115	2020	M45	44	2610	2210	12300