



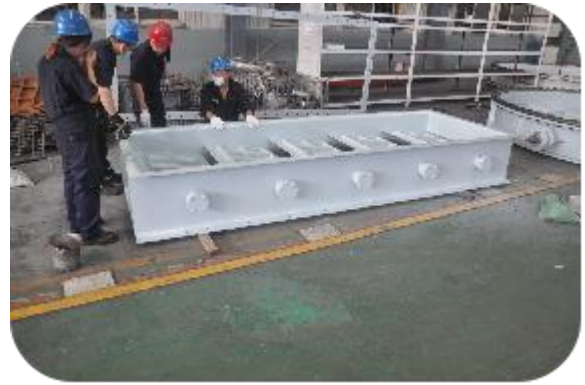
### Air damper (light-duty)

For regulate the flow of air in an HVAC system for intake, exhaust, or mixed air applications.

**DN200-DN1200**

**END CONNECTION:WAFER,FLANGE**





**HEAVY DUTY CONTROL DAMPER**

## **Air damper (heavy-duty) INDUSTRIAL**

For regulate the flow of air in an HVAC system for intake, exhaust, or mixed air applications.

**DN200-DN4600**

**END CONNECTION:WAFER,FLANGE**

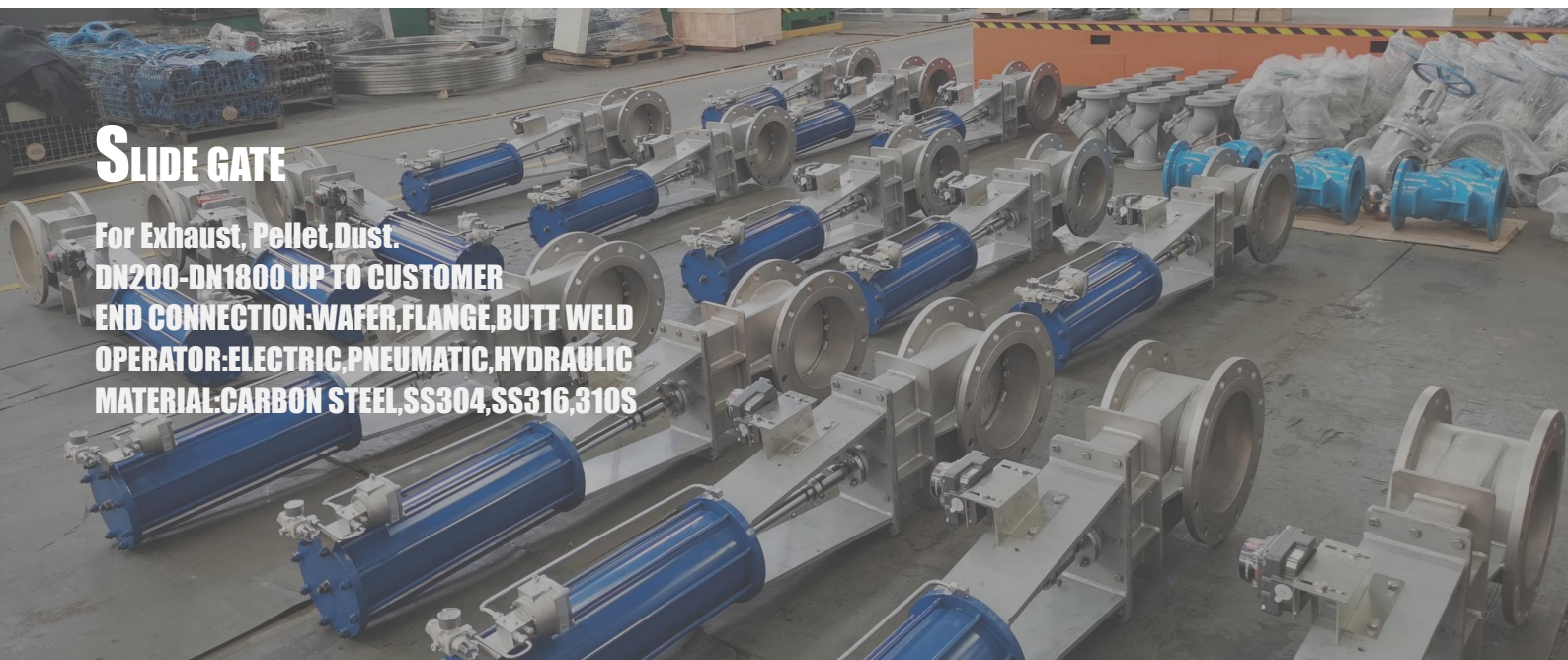


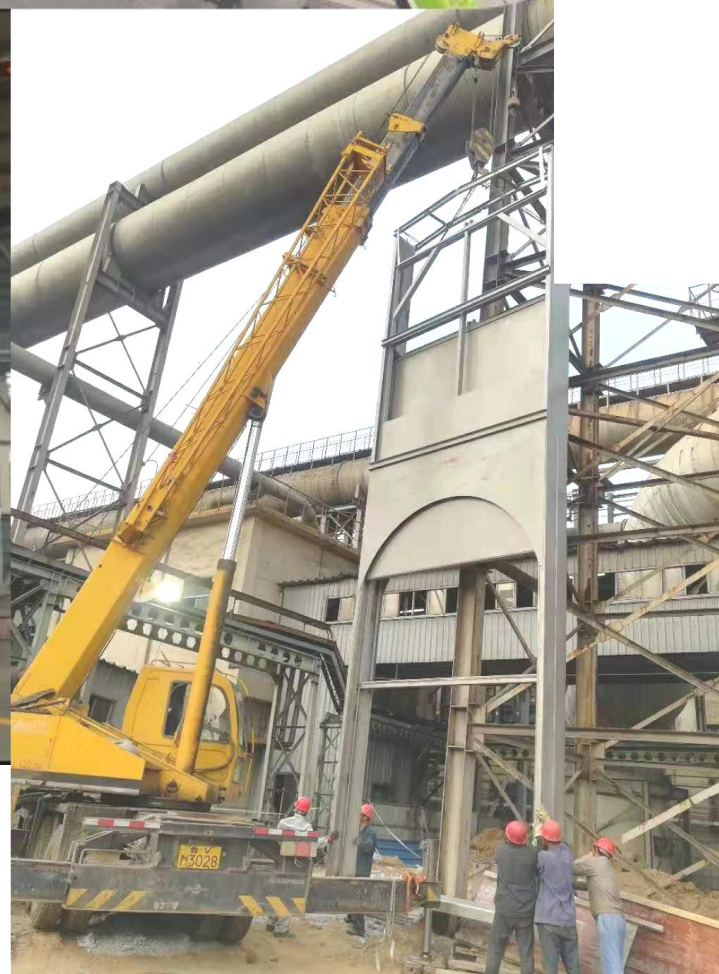


**SLIDE GATE**

## SLIDE GATE

For Exhaust, Pellet, Dust.  
DN200-DN1800 UP TO CUSTOMER  
END CONNECTION: WAFER, FLANGE, BUTT WELD  
OPERATOR: ELECTRIC, PNEUMATIC, HYDRAULIC  
MATERIAL: CARBON STEEL, SS304, SS316, 310S





## GUILLOTINE DAMPERS

**3600X3640**

**END CONNECTION:WAFER**

**OPERATOR:ELECTRIC,PNEUMATIC**

**MATERIAL:CARBON STEEL,SS304**



## REFRACTORY LINED DAMPER

SIZE:UP TO CUSTOMER  
END CONNECTION:FLANGE  
WORKING TEMP:**1100°C**  
OPERATOR:ELECTRIC,PNEUMATIC,HANDWHEEL



## LOUVER DAMPER

**SIZE:UP TO CUSTOMER**  
**END CONNECTION:FLANGE**  
**OPERATOR:ELECTRIC,PNEUMATIC,HANDWHEEL**



## Customized products

